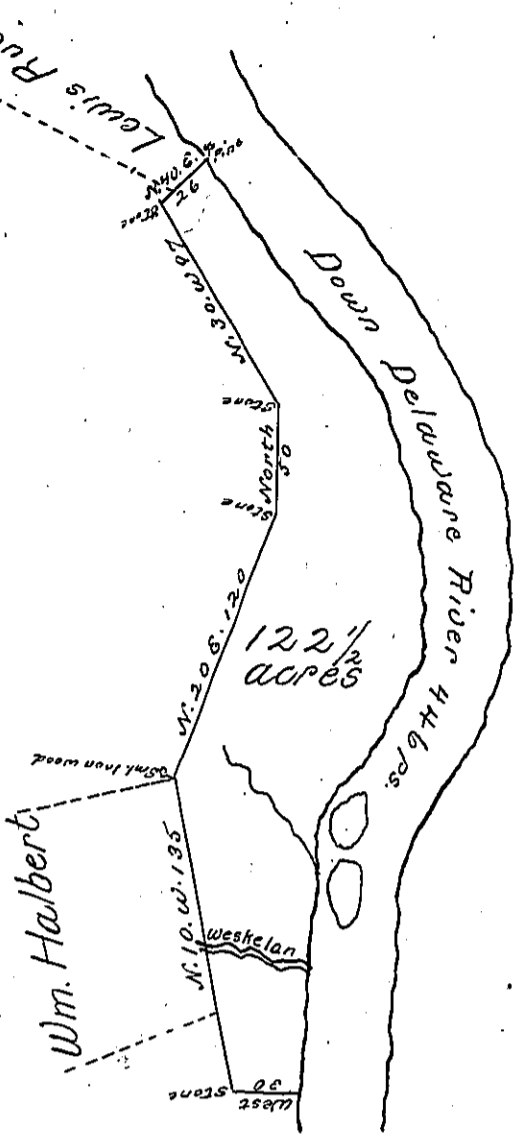


Bearing & distance
down Delaware River

1.	S. 36. E.	134
2.	S. 17 1/2 E.	70
3.	S. 9. W.	40
4.	S. 29. W.	62
5.	S. 67 W.	15
6.	S. 2 1/2 W.	125
		446.



By Virtue of a Warrant dated the 27th July 1784 Surveyed the 15th November 1784 to Aaron Westbrook the above described tract of Land Situate on the West side of Delaware River about 4 miles above the mouth of Beehawassin and about 1 mile below the mouth of Mashope Creek in Northampton County containing One hundred and twenty two Acres an half and the Allowance of Six pcent Ga.

N. B. James Vanaken's & Jacob West's Warrants of the 1 July 1784 were Surveyed on the Land this Warrant was Intended for—

To John Lukens Esqr } p. Geo. Palmer
Survi. General }

IN TESTIMONY that the above is a copy of the original remaining on file in the Department of Internal Affairs of Pennsylvania, made conformably to an Act of Assembly approved the 16th day of February, 1833, I have hereunto set my Hand and caused the Seal of said Department to be affixed at Harrisburg, this seventh day of November 1899

James W. Latta
Secretary of Internal Affairs.